

This guide describes the process of installing Citrix remote desktop services that allows staff and students to run a virtual College PC on their home PC.

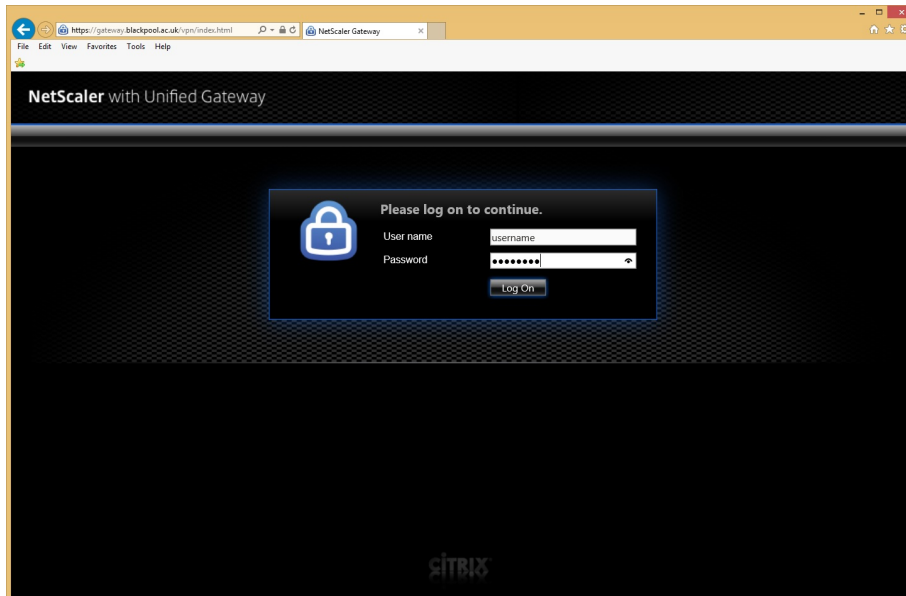
It is important to follow the guide in its entirety, clicking the options described and not skipping any steps.

To ensure that the installation is successful, please use Internet Explorer. Other browsers can be used, but we cannot guarantee that the system will work correctly.

Installation

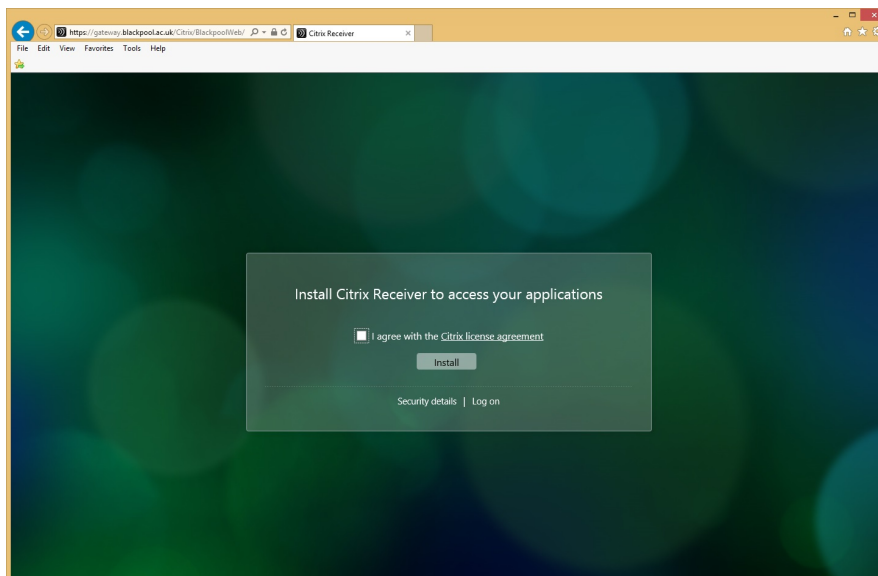
Step 1: Open Internet Explorer and go to: <https://gateway.blackpool.ac.uk>

You will be presented with the screen bellow

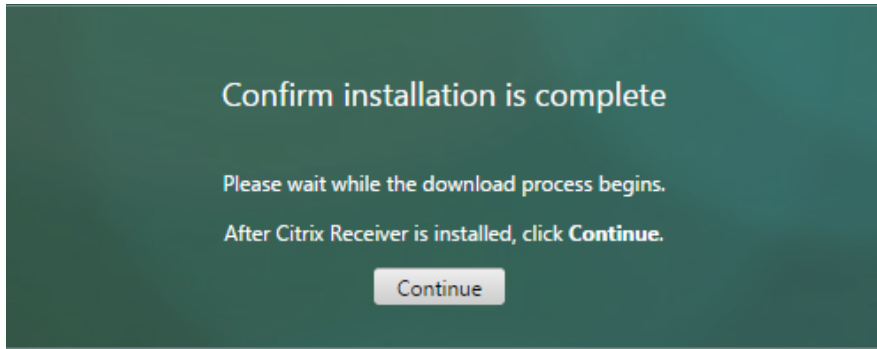


Step 2: Please enter your LITS username and password and click the “Log On”

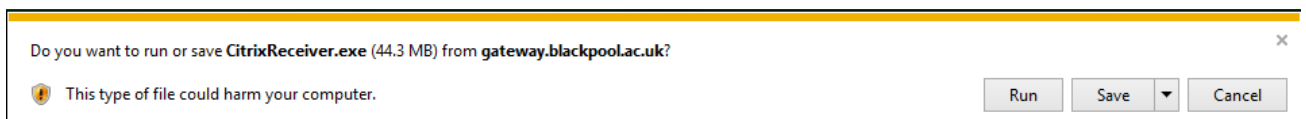
Step 3: When the following web page appears, click to agree to the Citrix License Agreements and then click the “Install” button:



Do not click the Continue button on this screen yet. You will come back to this screen once the Citrix Reciever is installed.



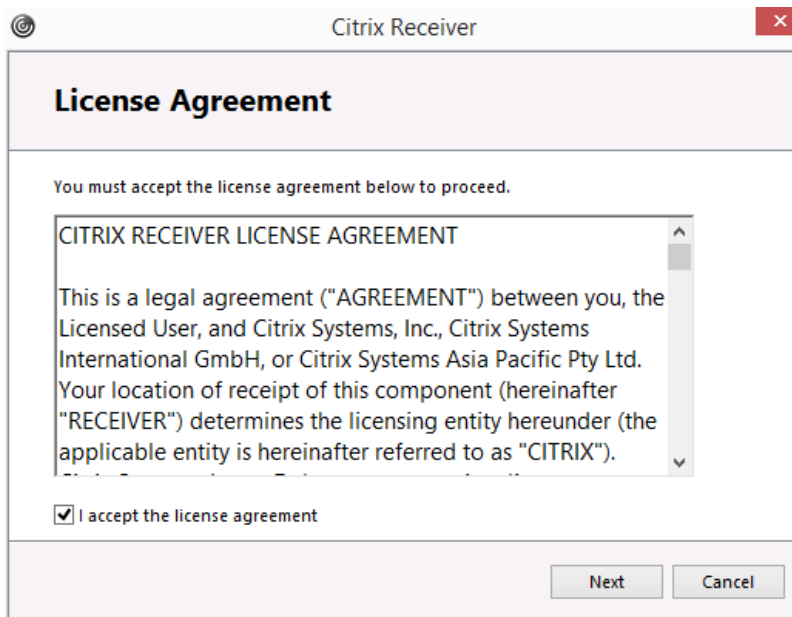
Step 4: You will be asked to save or run the CitrixReceiver.exe file. Click the run button.



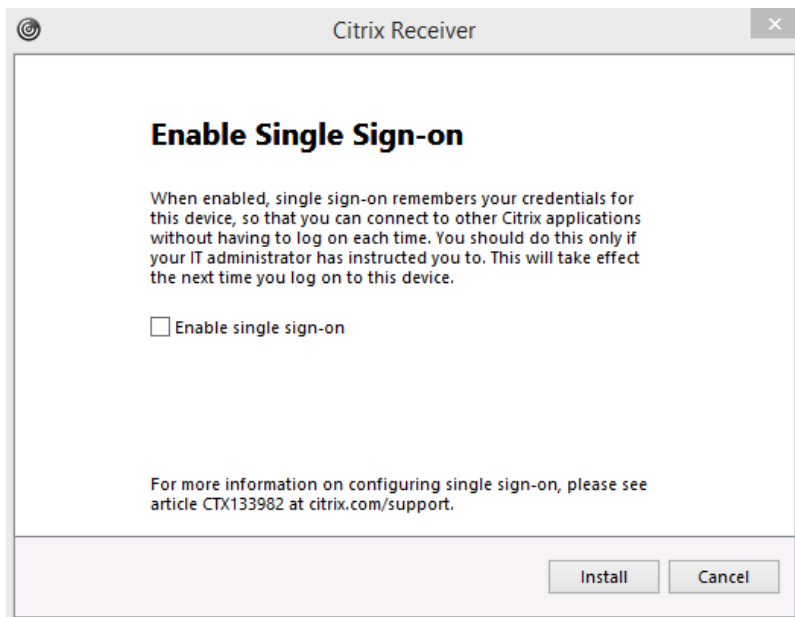
Step 5: You will be presented with the dialog box below.



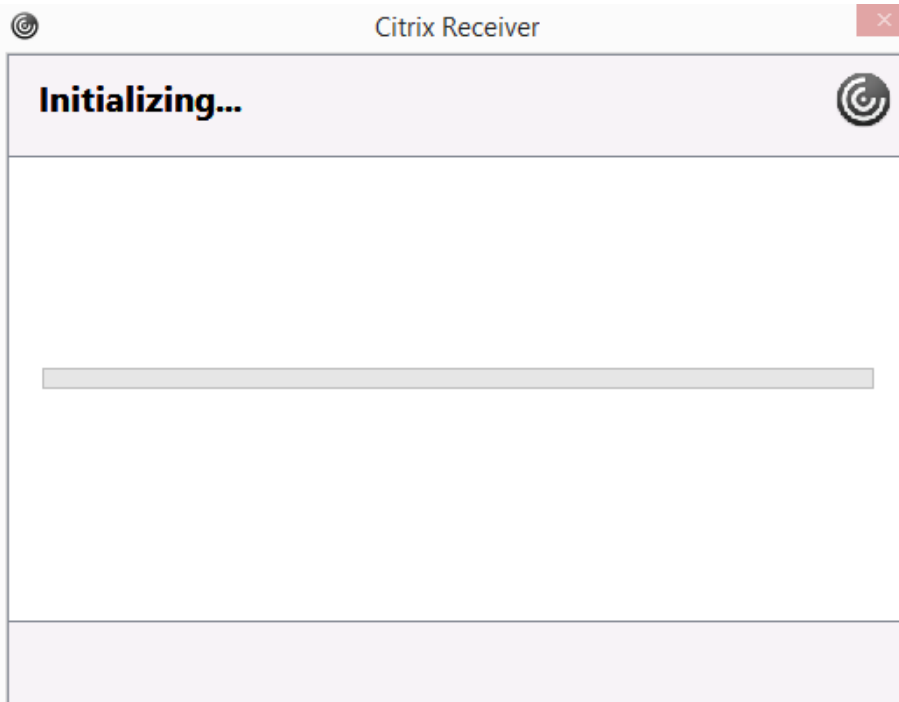
Step 6: Click Start



Step 7: Click the box to accept the licence agreement and press Next

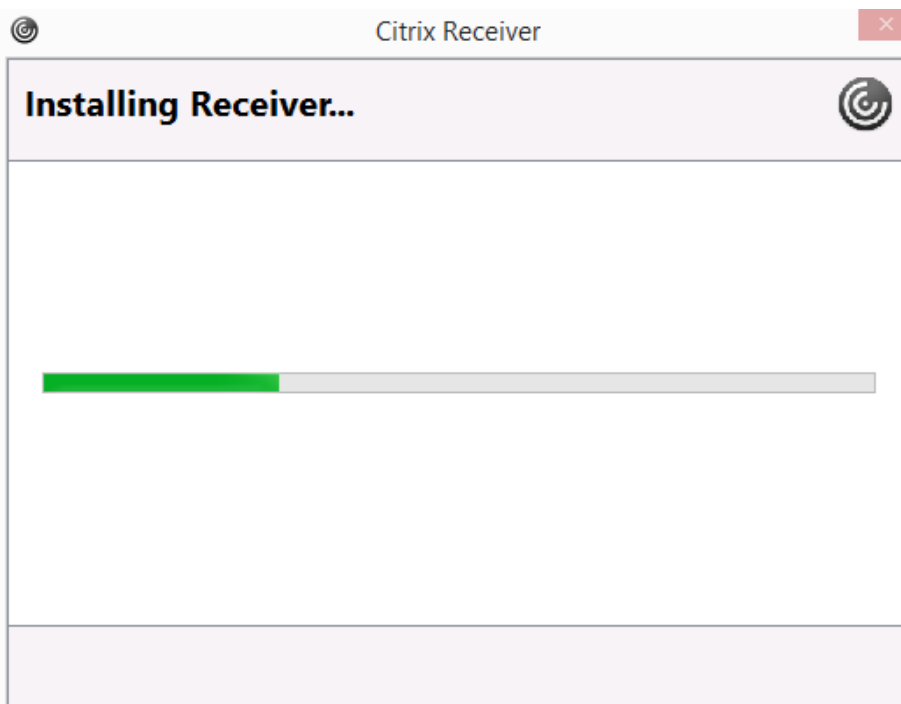


Step 8: Click install, but do not click the "Enable single sign-on" box

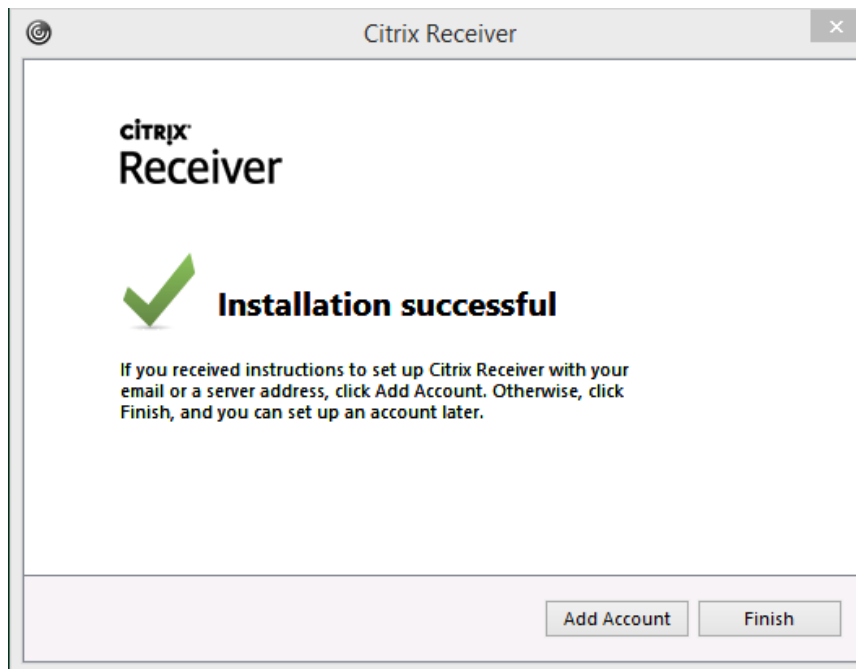


Step 9: The dialog box above will appear stating "Initializing"

Step 10: The receiver will start to install



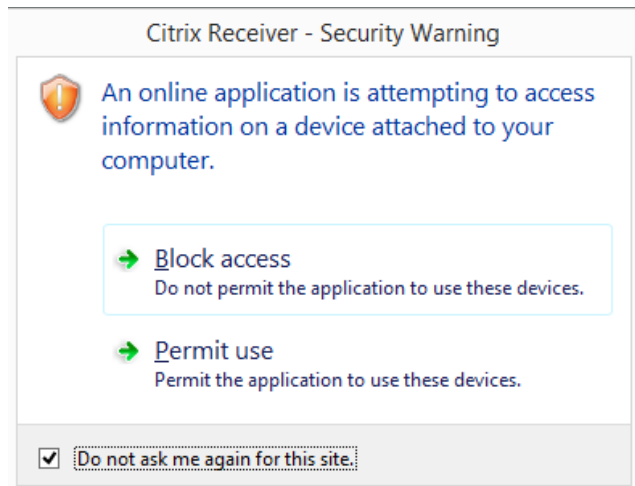
Step 11: Click Finish, do not click Add Account



Step 14: Click Finish and the Citrix desktop session opens and logs you into the system automatically



You may receive some security warnings, for example the one below



This message appears to allow or deny access to devices attached to your PC, for example a USB printer. You will get another warning regarding access to drives on your PC. If you want to be able to access the C drive on your PC for example you will need to grant either read or read/ write access.

Step 15: When you have finished the session, please go to the start menu and select the log off button:

