

DEGREE-LEVEL COURSES STARTING SEPTEMBER 2024

**BE MORE
CONFIDENT.**



BE MORE AT B&FC.

FLEXIBLE LEARNING TO TAKE YOUR CAREER TO THE NEXT LEVEL

DEGREE-LEVEL QUALIFICATIONS ONE DAY A WEEK FOR JUST 33 WEEKS

CUTTING-EDGE FACILITIES AND INDUSTRY-EXPERT TUTORS

PERSONALISED STUDY SUPPORT AND SMALL CLASS SIZES

BLACKPOOL AND THE FYLDE COLLEGE



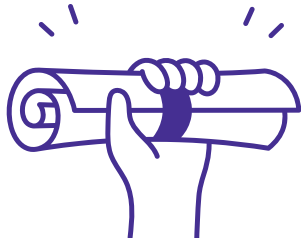
WELCOME TO DEGREE-LEVEL STUDY AT B&FC



STUDYING FOR A HIGHER QUALIFICATION HAS NEVER BEEN SO FLEXIBLE.

Sign up to a degree at B&FC and you'll find engaging courses, expert tuition, rewarding industry placements and exceptional facilities

With small class sizes, a dynamic curriculum, industry-relevant tuition and plenty of one-to-one support, you will be ideally placed to excel in your chosen field and able to develop the skills needed to thrive in today's competitive job market.



INDUSTRY-FOCUSED. CAREER-READY.

With our reputation for delivering outstanding technical and professional education, it comes as no surprise that our courses focus on industry-relevant training. Working with over 1,800 employer partners means we have a real insight into what various industry sectors are looking for in their graduate recruits which allows us to tailor our course content accordingly. What this means is that students who graduate from B&FC - whether at Level 4, 5 or 6 - are ready to hit the ground running when it comes to employment.

You'll already be familiar with all the technologies and equipment you'll encounter in the workplace too because we have been able to invest in industry-standard facilities to make the move from study to work even easier.

CAREER CHANGE SEES ALEX REACHING FOR THE STARS

CASE STUDY: ALEX MORTIMER



Course: BEng (Hons) Aeronautical Engineering

The sudden death of his father made Alex question whether his existing career as a chef really gave him what he wanted from life. With a view to pursuing his dream of becoming an astrophysicist, he decided to hang up his apron and enrol on an Access to HE course at B&FC.

This led to him studying for an Aeronautical Engineering degree which he is currently halfway through. As a father to two young children, Alex has found that his course gives him the flexibility to meet his family commitments as well as having ample time to study.

Winning a prestigious Business of Science Innovation Award in his first year for ODIN, a system Alex designed to collect space debris in low orbit, was a real confidence boost and just goes to prove that the sky's the limit when it comes to Alex pursuing his dream career.

WHAT MAKES PEOPLE WANT TO STUDY AT B&FC?

EMPLOYMENT-FOCUSED

- + Courses taught by industry specialists
- + Work-based learning and excellent industry placements
- + Course content co-created with employer partners to ensure industry relevance

SUPPORTIVE

- + Personalised support plan
- + Small, friendly classes with lots of one-to-one help
- + Disability Confident Leader with accessible campuses and tutors to personalise your learning experience

CONVENIENT AND FLEXIBLE

- + Options to study for one, two or three years
- + Class attendance from as little as one day a week
- + Flexible timetables so that study can fit around your commitments

AFFORDABLE

- + No upfront fees
- + Up to £10,227 Maintenance Loan (repayable when earning £25k)¹
- + £1,963 Parents Learning Allowance (non-repayable)¹
- + £323 a week Childcare Grant for two or more children (non-repayable)¹
- + £500 Bursary² (non-repayable)
- + 25% Council Tax discount¹

"My foundation degree gave me a thirst for education and learning again. The support from the tutors has been phenomenal. If you sent an email, you'd get a reply straight away and they were really understanding of me working as well as studying. It was amazing."

Nazya Khalid,
Business Management

HIGHLY RATED

- + A UK Top 15 University degree (awarded by Lancaster University)³



Overall: **Gold**

Student experience: **Gold**

Student outcomes: **Gold**

Teaching Excellence Framework

- + One of only three further education colleges in England to be rated Gold for student outcomes, student experience and overall, outperforming some well-known universities⁴

"When I started I assumed a degree was just a degree but getting a degree from Lancaster does pack a bit of weight behind it. And I think it's important when people are graduating. It can make all the difference."

Marvyn Atkinson,
Mechatronic Engineering

SUCCESSFUL

- + 85% of B&FC graduates are in work or further study within one year⁵
- + 38% of B&FC graduates in highly skilled employment are earning £33K or more annually compared to just 23% nationally⁶
- + Ranked in the top 7% of further education colleges in England for student success⁷

"Thanks to my degree, I got a great job almost immediately and I've been working for a medical device company for eight months now."

Connor Campbell,
Digital Media and Web Technologies

¹Eligibility applies – go to gov.uk/student-finance for full details ²Eligibility applies – go to blackpool.ac.uk/support/funding/degrees ³The complete University Guide League Tables 2024 ⁴Rated in September 2023 and lasts for four years ⁵HESA Graduate Outcomes Survey Respondents 2020/21 ⁶HESA Graduate Outcomes Survey Respondents 2020/21 ⁷National Achievement Rate Tables (NARTS) from the Department for Education and Skills Funding Agency 2021/22

HOW TO FINANCE YOUR COURSE

Don't let worries about how you'll cope financially stop you fulfilling your career ambitions. There's plenty of help available, some of which you don't have to pay back. And even with the stuff you do, the repayments don't kick in until you're earning at least £25,000.



STUDENT FINANCE CALCULATOR

Get a quick estimate of what student loans, grants, bursaries and other funding you could get with the Government's Student Finance Calculator at

gov.uk/student-finance-calculator

PAYING YOUR FEES AND LIVING EXPENSES

You can apply for a **tuition fee loan** to cover each year of your degree-level study. If you're not sure how many years you are planning to do, you can apply for finance a year at a time or for the whole amount if you are committed to three years. As well as your tuition fee loan, you can apply for a **maintenance loan** of up to **£10,227** per year to help with living costs. With nothing to pay upfront and repayments that don't kick in until you are earning at least £25,000, financing your course could be easier than you think.

And there's even more help available.

NON-REPAYABLE GOVERNMENT FINANCIAL SUPPORT⁸

- + **Help for those supporting an adult partner or relative**
Adult Dependents' Grant up to £3,438.
- + **Help for parents.** Parents' Learning Allowance between £50 and £1,963 a year if you're a full-time student with children.
- + **Childcare Grant.** Up to £193.62 a week for one child, or up to £331.95 a week for two or more children, if you're a full-time student and have a child/children under 15, or under 17 if they have special educational needs.
- + **Help if you have a learning difficulty, health problem or disability.** Disabled Students' Allowance up to £26,948 a year to help cover the study-related costs you have due to a mental health problem, long-term illness or any other disability.

⁸ Eligibility applies – go to gov.uk/student-finance for full details





NON-REPAYABLE B&FC FINANCIAL SUPPORT⁹

+ Up to £500 with B&FC's Advantage Bursary

A means-tested bursary of up to £500 to help towards the cost of equipment.

+ Up to £1,000 a year with B&FC's Access Scholarship

You could receive up to £1,000 a year for a maximum of three years if you're a care leaver, young carer or estranged student.

+ Hardship Fund

B&FC can access funding for those who find themselves facing financial hardship. This is dependent on exceptional individual circumstances – if you believe this applies to you, speak to one of our friendly and professional advisers.

+ B&FC Opportunity Scholarship

B&FC will support up to five new undergraduate students from Black, Asian and Minority Ethnic backgrounds, and will cover the cost of tuition fees for up to 3 years.

⁹ Eligibility applies – go to blackpool.ac.uk/support/funding/degrees



SUPPORT AT EVERY STEP PAVED THE WAY TO CARRIE'S SUCCESS

CASE STUDY: CARRIE LEE



Course: BA(Hons) Criminology and Criminal Justice

Prior to starting her education journey with B&FC, Carrie had lost her business and her income due to unforeseen circumstances and was naturally concerned about the financial impact of returning to study.

Initially taking an Access to HE course, she was worried that purchasing additional resources to complete her course might be beyond her budget. An Advanced Learner Loan paid for her tuition fees and Carrie also received a monthly bursary as well as help with childcare costs which help her manage financially

When Carrie moved on to degree level study, she continued to get financial help including:

- + A TUITION FEE LOAN
- + £1,893 A YEAR PARENTS' LEARNING ALLOWANCE
- + HELP WITH CHILDCARE COSTS FOR HER THREE CHILDREN
- + A MAINTENANCE LOAN WORTH OVER £900 A YEAR
- + A £500 ADVANTAGE BURSARY
- + FREE HEALTHY BREAKFAST EVERY MORNING

What's more, because she did an Access to HE course, her Advanced Learner Loan was written off once she started her degree.

"As a mum of three and a wife, being able to study without worry about finance has been a huge weight off my shoulders and has meant I can really concentrate on my coursework."

ALL THE SUPPORT YOU NEED

Right from the start, our staff and student support teams will ensure you have access to all the support you need. We are always on hand to provide you with advice, support and guidance so that you can achieve your ambitions and make the most of your time at College.



WE OFFER A RANGE OF SUPPORT SERVICES TO HELP YOU GET THE MOST FROM YOUR STUDIES, REALISE YOUR CAREER GOALS AND KEEP YOUR PERSONAL LIFE ON TRACK.

HERE'S WHAT WE OFFER:

Financial Support

Whilst there's plenty of financial support out there, we can help you access it. We're here if you need support filling in forms or to check you're getting everything you're entitled to.

Careers Support

At Blackpool and The Fylde College, we don't just care about the here and now – we want to help you realise your future goals. Our Careers Team are on hand to give you specialist advice and guidance to improve your career prospects and help you land the perfect role.

Study Skills Support

Our Higher Education Learning Mentors (HELMs) – unique to B&FC – provide one-to-one support in assignment planning, researching, exam preparation, referencing, revision and reflective writing. They will give you all the assistance you need to reach your full potential.

Support from Tutors

Our tutors have specialist industry knowledge which means they're ideally placed to enrich your learning. Along with smaller class sizes which mean you have

more one-to-one support, they can provide valuable feedback and give you a real insight into what working in the sector is like.

Support for Students with Disabilities and Learning Difficulties

We actively encourage applications from students who may need additional support to facilitate their learning. This includes students with physical disabilities, sensory loss, autism, dyslexia, dyspraxia and mental health issues. All our campuses are wheelchair-accessible and we have specialist teams in place to support a full range of disabilities and learning difficulties. We also have a specialist finance team to help students apply for the Disabled Student Allowance which can currently provide up to £26,948 to cover study-related costs.

Confidence

As well as all the practical support you need to complete your studies, we'll also give you the tools to build your confidence. Not only will this have a positive impact on your education and career, but will give you the skills to meet life's challenges head on and help you live the life you want to lead.

DEGREE IN SOFTWARE ENGINEERING IS A GAME-CHANGER FOR AARON

AARON MCNAIR BSc (Hons) Software Engineering (Games Development)

Working as a service technician wasn't working out for Aaron and it certainly wasn't where he wanted to be in ten years' time. An interest in computing in a world becoming ever more dependent on digital technologies made a degree in Software Engineering the logical choice.

The flexibility inherent in the programme delivery also meant that Aaron was able to work full-time too. Whilst this took a certain amount of juggling, he found the support he received at college made such a difference when it came to managing his time well.

Help from the Higher Education Learning Mentors improved his research and essay writing skills whilst the Careers Team gave him invaluable advice on improving his CV and preparing for interviews. It certainly worked as Aaron landed a fantastic graduate role in exactly the area he'd been looking for.



PREPARING FOR HE

At B&FC, we offer a range of courses to help students prepare for the next stage of their education journey.



PREPARING FOR HE COURSES

Our Preparing for Higher Education course offers students an introduction to studying at degree level. Over the course of several weeks, you will cover topics including academic writing skills, presentation skills, research techniques for academic study as well as generic skills which will help you to manage your time more effectively, reduce stress and build your confidence.

Each session is 3 hours and is followed by a 1-hour drop-in workshop where students can get additional support. The only entry requirement is that you have an active application for a degree-level course at B&FC.

These courses will also give you the opportunity to meet your tutors and get to know your fellow students, which will help you to integrate when you start your degree programme proper.

The B&FC Admissions Team will contact you to place you on the most appropriate course.



"I found them very useful. I have taken lots of notes that will definitely help me. Lots of information and learning new ways to study."

FLYING START WORKSHOPS

Every year, the B&FC Higher Education Learning Mentors (HELMs) also run Flying Start workshops. These workshops which are usually delivered in September just before the start of the academic year, last for just half a day and are tailored to different groups of students depending on their experiences, backgrounds and other commitments. No matter what your situation is, there will be a workshop suited to you. In previous years, we have run workshops helping students who are returning to education after a long break, those who are progressing directly from an FE to HE course and students who are planning to work as well as study.

We do, however, try to tailor our workshops based on what our students want so whilst we're busy planning for 2024 you could help to shape our provision by filling in the short form on our dedicated website page at blackpool.ac.uk/highereducation/flying-start

This is also where you will find the workshops on offer in September once the details are finalised.



ACCESS TO HIGHER EDUCATION

ONE YEAR CAN CHANGE EVERYTHING

If your heart is set on going to university but you don't have the qualifications or experience, an Access to Higher Education Diploma gets you degree-ready in just one year. Studying at B&FC with access to experienced, specialist tutors and state-of-the-art facilities means you will be exceptionally well-placed to develop the skills and experience you need to progress on the path to your dream career.



IF YOU NEED ENGLISH AND MATHS, THE ACCESS TO HE TEAM WILL HELP YOU TO PROGRESS THIS.

Bridge the gap

Each Access to HE diploma is tailored to follow a specific subject area and is a popular route which many learners take to get into university and go on to enjoy successful careers. Whether you've just started to plan your future career, or are looking for a career change, Access to HE is the ideal first step to get you started.



Why it pays to do an Access to HE Diploma

You may be eligible to do an Access to HE course for free! If not, you could get an Advanced Learner Loan to cover your course fees with nothing to pay upfront and no repayments until you're earning at least £25,000 a year.

What's more, the loan is written off if you then go on to complete a degree-level qualification.

Preparing you to go higher

As well as learning subject specific modules, an Access course will build your academic skills and boost your confidence to get you ready for degree-level study. You'll learn academic skills such as planning, researching and referencing.

Course Title	Start Date week commencing	Day(s)	Time	Duration
ACCESS TO HIGHER EDUCATION DIPLOMA (University Centre Campus)				
Education (Teaching-Primary) - Access to Higher Education (HE) Diploma	02/09/2024	Mon, Tue	9am - 4pm	1 Year
English and Creative Writing - Access to Higher Education (HE) Diploma	09/09/2024	Mon, Tue	9am - 4pm	1 Year
Health and Social Science (Pre Access) - Level 2	09/09/2024	Mon or Wed	9am - 4pm	1 Year
Nursing and Midwifery - Access to Higher Education (HE) Diploma	02/09/2024	Mon, Tue or Thur, Fri	9am - 4pm	1 Year
Paramedic Science - Access to Higher Education (HE) Diploma	02/09/2024	Mon, Tue or Thur, Fri	9am - 4pm	1 Year
Policing and Criminal Justice - Access to Higher Education (HE) Diploma	09/09/2024	Mon, Tue or Thur, Fri	9am - 4pm	1 Year
Science - Access to Higher Education (HE) Diploma	02/09/2024	Thur, Fri	9am - 4pm	1 Year
Social Care - Access to Higher Education (HE) Diploma	02/09/2024	Tue, Wed	9am - 4pm	1 Year
Social Sciences - Access to Higher Education (HE) Diploma	02/09/2024	Tue, Wed	9am - 4pm	1 Year
Social Work - Access to Higher Education (HE) Diploma	02/09/2024	Tue, Wed	9am - 4pm	1 Year

JOIN US ONE DAY A WEEK FOR 33 WEEKS FOR A DEGREE-LEVEL QUALIFICATION



A number of our degree qualifications now run just one day a week, enabling people who would otherwise struggle to find the time the opportunity to study with us.

Speaking to our current students and listening to our employer partners has led to us growing this provision as we understand that work commitments can sometimes be a barrier to degree-level study.

With many of our students returning to education after years away from the classroom and often with multiple commitments to work and family, being able to study in college just one day a week has allowed them to juggle their time effectively to successfully manage all their priorities.

Employers, who recognise the value of upskilling, also tell us that they are more able to accommodate employee requests for flexible working if that involves just a single day away from the business. It makes the option of compressed hours (where employees work longer hours but do fewer days) more feasible with some employers even saying they are willing to reduce the number of days worked to benefit from having a more qualified employee who can add extra value to the business.

The programmes on this list are focused on sectors where we know qualifications can make a real difference to individuals' job prospects, giving them the opportunity to progress to better paid, more meaningful work.

Course Title	Start Date week commencing	Day(s)	Time	Duration
CHILDREN, YOUNG PEOPLE AND FAMILIES (University Centre Campus)				
Children, Young People and Families - Certificate of Higher Education	09/09/2024	Mon	9.15am - 4.45pm	33 weeks
Early Childhood Studies - Certificate of Higher Education	09/09/2024	Mon	9.15am - 5.15pm	33 weeks
COMPUTING AND DIGITAL INDUSTRIES (University Centre Campus)				
Cyber Security - Certificate of Higher Education	13/01/2025	Thur	10:30am - 8.15pm	33 weeks
ENGLISH (University Centre Campus)				
English Studies - Certificate of Higher Education	09/09/2024	Mon 9am - 5pm + Mon Evening or Mon 9am - 5pm + Tue Morning		33 weeks
HEALTH AND SOCIAL CARE (University Centre Campus)				
Mental Health and Resilience - Certificate of Higher Education	09/09/2024	Tue	9am - 5pm	33 weeks
Adult Health and Social Care - Certificate of Higher Education	09/09/2024	Wed	9.15am - 5.15pm	33 weeks
Counselling and Applied Psychology - HNC	09/09/2024	Wed	9am - 9pm	33 weeks
HOSPITALITY MANAGEMENT (University Centre Campus)				
Hospitality Management - HNC	09/09/2024	Mon	9.30am - 5.30pm	33 weeks
LEARNING SUPPORT (University Centre Campus)				
Early Years Advanced Practitioner - Level 4 Certificate	16/09/2024	Wed	6pm - 9pm	25 weeks
Advanced Practitioner in Schools and Colleges - Level 4 Certificate	16/09/2024	Wed	6pm - 9pm	25 weeks
Special Education Needs and Disabilities (SEND) Leadership and Management - Level 4 Award	16/09/2024	Tue	6pm - 9pm	12 weeks
SPORT (University Centre Campus)				
Physical Activity, Health and Leadership - HNC	09/09/2024	Thur	9.30am - 5.30pm	33 weeks

DEGREE-LEVEL COURSES STARTING SEPTEMBER

**NO UPFRONT
FEES AND NON
REPAYABLE
SUPPORT
AVAILABLE**

Course Title	Start Date week commencing	Day(s)	Time	Duration
AUTOMOTIVE AND MOTORSPORT (Bispham Campus)				
Automotive and Motorsport Engineering Technology - Foundation Degree with Foundation Year	09/09/2024	Mon to Wed	9am - 4pm	3 Years
Automotive and Motorsport Engineering Technology - Foundation Degree	09/09/2024	Tue and Wed	9am - 4.30pm	2 Years
Automotive and Motorsport Engineering Technology - BEng Hons Degree - Topup	09/09/2024	Mon and Tue	9am - 4.30pm	1 Year
Automotive and Motorsport Engineering Technology - Certificate of Higher Education	09/09/2024	Tue Wed and Thur	9am - 4pm	1 Year
Automotive and Motorsport Engineering Technology - Certificate of Higher Education with Foundation Year	09/09/2024	Mon to Wed	9am - 4pm	2 Years
BUSINESS SCHOOL OF MANAGEMENT (University Centre Campus)				
Accounting - Level 4 (AAT) (Part Time) (see page 28 for more details)	02/09/2024	Tue	9.30am - 3.30pm	2 Years
CIPD People Management - Level 5 (Part Time) (see page 28 for more details)	02/09/2024	Mon	12:45pm - 7:30pm	2 Years
Management and Leadership (CMI) - Level 5 (Part Time) (see page 28 for more details)	23/09/2024	Tue	9:30am - 4.30pm	2 Years
Business Management - Certificate of Higher Education	09/09/2024	Tue and Wed	9am - 4pm	1 Year
Business Management - Foundation Degree	09/09/2024	Tue Wed or Thur	9am - 4.30pm	2 Years
Business Management (Leadership) - BA Hons Degree - Topup	09/09/2024	Mon or Thur	9am - 4pm	1 Year
Business Management (Digital Marketing) - BA Hons Degree - Topup	09/09/2024	Mon or Thur	9am - 4pm	1 Year
Business Management (Financial Management) - BA Hons Degree - Topup	09/09/2024	Mon or Thur	9am - 4pm	1 Year
CHILDREN, YOUNG PEOPLE AND FAMILIES (University Centre Campus)				
Children, Young People and Families - Certificate of Higher Education	09/09/2024	Mon	9.15am - 4.45pm	1 Year
Children, Young People and Families - Foundation Degree	09/09/2024	Mon	9.15am - 4.45pm	2 Years
Children, Young People and Families - BA Hons Degree - Topup	09/09/2024	Wed	9.15am - 4.45pm	1 Year
Early Childhood Studies - Certificate of Higher Education	09/09/2024	Mon	9.15am - 5.15pm	1 Year
Early Childhood Studies - Foundation Degree	09/09/2024	Mon	9.15am - 5.15pm	2 Years
COMPUTING AND DIGITAL INDUSTRIES (University Centre Campus)				
Computer Science and Digital Technologies - Certificate of Higher Education	09/09/2024	Thur and Fri	9am - 4.30pm	1 Year
Computer Science and Digital Technologies - Foundation Degree	09/09/2024	Mon and Fri	9am - 9pm	2 Years
Computer Science and Digital Technologies - BSc Hons Degree - Topup	09/09/2024	Mon and Thur	10:30am - 6pm	1 Year
Software Engineering (Game Development) - Foundation Degree	09/09/2024	Mon and Tue	9am - 4pm	2 Years
Software Engineering (Game Development) - BSc Hons Degree - Topup	09/09/2024	Mon and Tue	10:30am - 9pm	1 Year

Course Title	Start Date week commencing	Day(s)	Time	Duration
Software Engineering (Systems Development) - Foundation Degree	09/09/2024	Tue and Wed	9am - 4pm	2 Years
Network Engineering (Systems Administration) - Foundation Degree	09/09/2024	Tue and Wed	9am - 4pm	2 Years
Network Engineering (Systems Administration) - BSc Hons Degree - Topup	09/09/2024	Mon and Tue	9am - 4pm	1 Year
Cyber Security - Certificate of Higher Education	13/01/2025	Thur	10:30am - 8.15pm	1 Year
Network Engineering (Cyber Security) - Foundation Degree	09/09/2024	Mon and Thur	9am - 4pm	2 Years
Network Engineering (Cyber Security) - BSc Hons Degree - Topup	09/09/2024	Mon and Thur	9am - 4pm	1 Year
CREATIVE ARTS - Blackpool School of Arts (University Centre Campus)				
Art & Design (Arts Practice) - HNC	09/09/2024	Wed to Fri	9.45am - 4.30pm	1 Year
Art & Design (Arts Practice) - HND	09/09/2024	Wed to Fri	9.45am - 4.30pm	1 Year
Art & Design (Fashion, Textiles and Costume) - HNC	09/09/2024	Wed to Fri	9.45am - 4.30pm	1 Year
Art & Design (Fashion, Textiles and Costume) - HND	09/09/2024	Wed to Fri	9.45am - 4.30pm	1 Year
Art & Design (Graphic Design & Illustration) - HNC	09/09/2024	Wed to Fri	9.45am - 4.30pm	1 Year
Art & Design (Graphic Design & Illustration) - HND	09/09/2024	Wed to Fri	9.45am - 4.30pm	1 Year
Art & Design (Photography) - HNC	09/09/2024	Wed to Fri	9.45am - 4.30pm	1 Year
Art & Design (Photography) - HND	09/09/2024	Wed to Fri	9.45am - 4.30pm	1 Year
CRIMINOLOGY (University Centre Campus)				
Criminology and Criminal Justice - Certificate of Higher Education	09/09/2024	Thur and Fri	9.30am - 2.30pm	1 Year
Criminology and Criminal Justice - Foundation Degree	09/09/2024	Mon and Tue	9am - 5pm	2 Years
Criminology and Criminal Justice - BA Hons Degree - Topup	09/09/2024	Wed and Fri	9am - 5pm	1 Year
ENGINEERING (Bispham Campus)				
Engineering (General Engineering) - HNC (Part-time)	09/09/2024	Tue	9am - 5.15pm	2 Years
Engineering (General Engineering) - HNC	09/09/2024	Tue and Wed	9am - 5.15pm	1 Year
Engineering (Manufacturing Engineering) - HNC (Part-time)	09/09/2024	Wed	9am - 5.15pm	2 Years
Engineering (Mechanical Engineering) - BEng Hons Degree (Part-time)	09/09/2024	Tue	9am - 5.15pm	3 Years
Engineering (Mechanical Engineering) - BEng Hons Degree	09/09/2024	Wed and Thur	9am - 5.15pm	3 Years
Engineering (Aeronautical Engineering) - HNC (Part-time)	09/09/2024	Wed	9am - 5.15pm	2 Years
Engineering (Aerospace Engineering) - BEng Hons Degree (Part-time)	09/09/2024	Wed and Thur	9am - 5pm	3 Years
Engineering (Aerospace Engineering) - BEng Hons Degree	09/09/2024	Wed and Thur	9am - 5pm	3 Years
Engineering (Electrical and Electronic Engineering) - HNC (Part-time)	09/09/2024	Wed	9am - 5.15pm	2 Years
Engineering (Electrical and Electronic Engineering) - BEng Hons Degree (Part-time)	09/09/2024	Tue	9am - 5.15pm	3 Years
Engineering (Electrical and Electronic Engineering) - BEng Hons Degree	09/09/2024	Tue Wed and Thur	9am - 5pm	3 Years
Engineering (Robotics and Automation Engineering) - BEng Hons Degree (Part-time)	09/09/2024	Tue	9am - 5.15pm	3 Years
Engineering (Robotics and Automation Engineering) - BEng Hons Degree	09/09/2024	Tue Wed and Thur	9am - 5pm	3 Years
Engineering (Industrial Engineering) - BEng Hons Degree (Part-time)	09/09/2024	Tue	9am - 5.15pm	3 Years
Engineering (Industrial Engineering) - BEng Hons Degree	09/09/2024	Wed and Thur	9am - 5pm	3 Years

Course Title	Start Date week commencing	Day(s)	Time	Duration
ENGLISH (University Centre Campus)				
English Studies - Certificate of Higher Education	09/09/2024	Mon 9am - 5pm + Mon Evening or Mon 9am - 5pm + Tue Morning		1 Year
English Studies - Foundation Degree	09/09/2024	Mon and Tue	9am - 5pm	2 Years
HEALTH AND SOCIAL CARE (University Centre Campus)				
Mental Health and Resilience - Certificate of Higher Education	09/09/2024	Tue	9am - 5pm	1 Year
Mental Health and Resilience - Foundation Degree	09/09/2024	Tue	9.15am - 4.45pm	2 Years
Mental Health and Resilience - BA Hons Degree - Topup	09/09/2024	Mon	9.45am - 3.45pm	1 Year
Adult Health and Social Care - Certificate of Higher Education	09/09/2024	Wed	9.15am - 5.15pm	1 Year
Adult Health and Social Care - Foundation Degree	09/09/2024	Wed	9.15am - 5.15pm	2 Years
Adult Health and Social Care - BA Hons Degree - Topup	09/09/2024	Tue	9.15am - 4.45pm	1 Year
Counselling and Applied Psychology - HNC	09/09/2024	Wed	9am - 9pm	1 Year
HOSPITALITY MANAGEMENT (University Centre Campus)				
Hospitality Management - HNC	09/09/2024	Mon	9.30am - 5.30pm	1 Year
LEARNING SUPPORT (University Centre Campus)				
Teaching and Learning Support - Foundation Degree	09/09/2024	Tue	9am - 5pm	2 Years
Teaching and Learning Support - BA Hons Degree - Topup	09/09/2024	Fri	9am - 5pm	1 Year
Early Years Advanced Practitioner - Level 4 Certificate	16/09/2024	Wed	6pm - 9pm	25 weeks
Advanced Practitioner in Schools and Colleges - Level 4 Certificate	16/09/2024	Wed	6pm - 9pm	25 weeks
Special Education Needs and Disabilities (SEND) Leadership and Management - Level 4 Award	16/09/2024	Tue	6pm - 9pm	12 weeks
PERFORMING ARTS AND MUSIC - Blackpool School of Arts (University Centre Campus)				
Immersive Performance Practice - Certificate of Higher Education	09/09/2024	Mon Tue and Wed	9am - 4.30pm	1 Year
Music (Technology) - HNC	09/09/2024	Tue Wed and Fri	9.45am - 3.30pm	1 Year
Music (Sound Design) - HND	09/09/2024	Wed to Fri	9am - 4.30pm	1 Year
PUBLIC SERVICES (University Centre Campus)				
Foundations of Military Leadership - HNC	09/09/2024	Wed and Thur	9am - 3pm	1 Year
Professional Policing (Pre-join) - BA Hons Degree	09/09/2024	Mon and Tue	9.30am - 4pm	3 Years
SCIENCE (University Centre Campus)				
Applied Science - Certificate of Higher Education	09/09/2024	Fri	9am - 4.30pm	1 Year
Applied Science (Chemistry) - Foundation Degree	09/09/2024	Tue	9am - 4pm	2 Years
Applied Science (Environmental Science) - Foundation Degree	09/09/2024	Tue	9am - 4pm	2 Years
Applied Science (Biosciences) - Foundation Degree	09/09/2024	Tue	9am - 4pm	2 Years
Marine Biology - BSc Hons Degree - Topup	09/09/2024	Tue and Thur	9.45am - 3.45pm	1 Year
Human Biosciences - BSc Hons Degree - Topup	09/09/2024	Mon and Tue	9.45am - 3.45pm	1 Year
SPORT (University Centre Campus)				
Physical Activity, Health and Leadership - HNC	09/09/2024	Thur	9.30am - 5.30pm	1 Year

PROFESSIONAL MANAGEMENT AND ACCOUNTING COURSES

If you're ambitious and want to get ahead in your career, you're in the right place!

Our specialist training courses provide you with the knowledge and skills to develop professionally and could lead to a recognised industry qualification.

AAT Accounting

Our AAT accredited accounting courses offer professional qualifications allowing you to develop or further a career in accounting. Covering a range of skills from double entry bookkeeping and basic costing principles to using bespoke accountancy software, the courses are taught by highly qualified industry specialists with knowledge of all the latest regulation and legislation within the sector.

AAT is a widely recognised qualification which can ultimately lead to chartered accountancy status and the wealth of opportunities which becoming a professional accountant provides.

Chartered Management Institute courses

Are you looking to improve your management and leaderships qualities? With highly sought after CMI

accreditation, our CMI courses will enhance your management effectiveness and sharpen your professional edge.

The qualification develops key skills such as managing resources, recruitment and information and gives you the competencies you need to become an effective manager.

Chartered Institute of Personnel and Development courses

The Chartered Institute of Personnel and Development (CIPD) is recognised as a benchmark for professionalism in many personnel, HR and people management roles.

The CIPD qualification introduces candidates to best practice principles in people management to give them the knowledge and skills to become effective people managers. This course is ideal for people who are looking to gain widely recognised qualification which will further their career in human resources.

COURSE TITLE	START DATE week commencing	DAYS	TIME	DURATION
PROFESSIONAL COURSES - DEGREE LEVEL (University Centre Campus)				
Accounting - Level 4 (AAT) (Part Time)	02/09/2024	Tue	9.30am - 3.30pm	2 Years
CIPD People Management - Level 5 (Part Time)	02/09/2024	Mon	12:45pm - 7:30pm	2 Years
Management and Leadership (CMI) - Level 5 (Part Time)	23/09/2024	Tue	9:30am - 4.30pm	2 Years

JENNIFER'S POTENTIAL IS ADDING UP

CASE STUDY: JENNIFER HICKES



Course: AAT Accounting

After a career as an operations manager, Jennifer decided it was time for a change. Opting to study accounting in the evenings at first, Jennifer juggled her coursework with her full-time job as well as caring for her first child. Then, when Jennifer fell pregnant for the second time, she was able to make the switch to studying during the day. She praises her tutors for being supportive throughout her time at B&FC and is now working with the NHS business services authorities in a role she really enjoys.

HIGHER AND DEGREE APPRENTICESHIPS

Higher and degree apprenticeships are a high quality alternative to the traditional degree route, combining highly skilled on-the-job training with higher-level study. They are ideally suited to young people who are ambitious academically but want to start their career straight away as well as existing employees who want to progress into managerial roles.



WHY CHOOSE APPRENTICESHIPS AT B&FC?

- + **YOUR OWN PERSONAL SKILLS COACH**
- + **HIGH LEVELS OF SUPPORT**
- + **WELL ESTABLISHED RELATIONSHIPS WITH 1,800 EMPLOYERS**
- + **IN-DEPTH UNDERSTANDING OF DIVERSE INDUSTRY SECTORS**

A programme built around you

The great thing about an apprenticeship supported by B&FC is that it's personalised to you. Your apprenticeship is made up of several different elements and each one reflects your individual abilities and career goals.

When you start, we will allocate you a skills coach, who will visit you at least once a month to guide and support you through your programme and help you to plan your future.

Advance your management career with the Chartered Manager Degree Apprenticeship

Delivered via your employer, the Chartered Manager Degree Apprenticeship offers you the opportunity to gain two professional management qualifications - a Chartered Management Institute Level 5 qualification and a BA(Hons) degree from Lancaster University.

Delivered in conjunction with the Chartered Management Institute (CMI), the CMDA is designed by industry, for industry. Equipping you with advanced knowledge and skills in management and leadership, the apprenticeship includes work-based learning and professional development.

83% OF CHARTERED MANAGERS SAY THEY ARE BETTER MANAGERS AFTER ACHIEVING CHARTERED MANAGER STATUS*

*Chartered Management Institute (CMI)

"Along with the amazing people I met on the course, I learnt more than I expected in many areas of leadership. I thoroughly enjoyed the course and found it very rewarding. This course helped me to understand many aspects of business to a much greater depth. Would I do it again? Absolutely!"

Kelly Fletcher, graduate of CMDA, School Business Manager, Ightenhill Nursery School



FOR MORE INFORMATION ON APPRENTICESHIPS VISIT BLACKPOOL.AC.UK/HADA OR CONTACT BUSINESS@BLACKPOOL.AC.UK

Degrees awarded by

Lancaster
University



APPLYING IS AS EASY AS...

1

Visit blackpool.ac.uk

Research the various options available to you, check your eligibility and choose your course.

2

Click 'Apply Now'

As soon as you've chosen your course you should apply online to secure your place. Click 'Apply Now' and complete the quick and easy application form.

3

Take up our invitation

Attend your Information, Advice and Guidance session with a tutor to discuss any questions and ensure you've made the right decision.

– Need some help with your decision or struggling to complete your application? Contact our friendly Course Enquiries Team on 01253 504 343 or info@blackpool.ac.uk

Bispham Campus | Ashfield Road | Bispham | FY2 0HB

University Centre | Park Road | Blackpool | FY1 4ES

BLACKPOOL.AC.UK



**OPEN
EVENT**



SAT 15 JUN
10.30AM - 2PM



SCHOOL LEAVERS

DEGREES

APPRENTICESHIPS

ADULT COURSES

BLACKPOOL.AC.UK/EVENTS